



# Effective Crowd Control For a Safer Venue



## High Quality Crowd Control Product and Valuable Branding Space - All in One Product Line

- ▶ Organize large crowds at ticket lines, entrances, parking lots, concessions and VIP areas
- ▶ **Extremely durable** products, resistant to tough wear & tear and outdoor use
- ▶ Standard **10 year warranty** on almost every product
- ▶ **True American manufacturing quality standards**

### Retracta-Belt® Stanchions

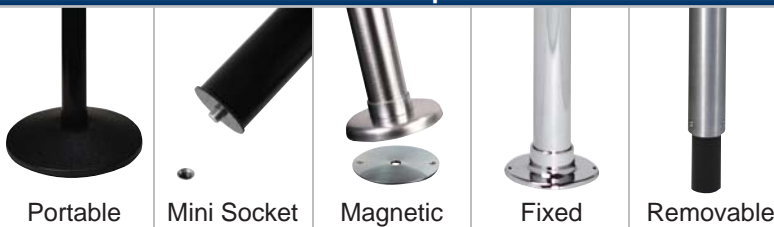


#### Typical Uses:

- ▶ Funnel large crowds into organized security lines
- ▶ Designate ticket and entrance lanes
- ▶ Define concession and shopping queue lines
- ▶ Restrict access to VIP or unauthorized areas



### Post Mount Options



Portable

Mini Socket

Magnetic

Fixed

Removable

### Post-N-Panel Systems



#### Typical Uses:

- ▶ Dual-Purpose: a secure barrier and marketing display, ideal for attracting attention toward concessions
- ▶ An attractive alternative to 'bicycle barriers'
- ▶ Prevent 'line-ducking' and keep small children on line



### Three Panel Styles Available to Suit Any Application

- Heavy-Duty:** a substantial barrier, ideal for defining queue perimeters
- Designer Series:** easily changeable inserts, ideal for marketing
- Top Beam:** quick and easy on-and-off design, ideal when removed often

This is a sample of our product line. All products shown here offer a variety of options, upgrades and accessories. Visit our website or call for more details on individual product offerings and our full line.

## Utility Products



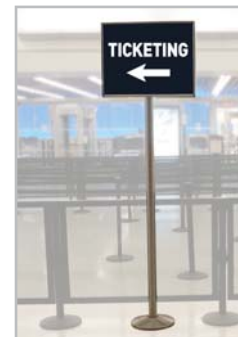
### Typical Uses:

- ▶ Limiting access to closed/unauthorized areas
- ▶ Frequent outdoor use
- ▶ Closing bathrooms, elevators, stairways etc. for maintenance
- ▶ Back-end uses such as warehouses and loading docks



A Visiontron Exclusive

## Sign Stands



### Typical Uses:

- ▶ Displaying frequently changed signage such as event promotions
- ▶ Wayfinding and directional
- ▶ Rules and regulations, safety procedures



## Additional Products and Accessories



Post & Ropes



Storage Carts



Belt & Rope Printing



Logo Mats



Belt Ends

## Product Focus:

### Crowd Control Barricades

#### Steel Barricades:

- ▶ Durable, secure and weatherproof
- ▶ Tamper-resistant hooks
- ▶ Welded sign panel
- ▶ Bridged or flat feet, 6.5' or 8' lengths



#### The Retracta-Cade:

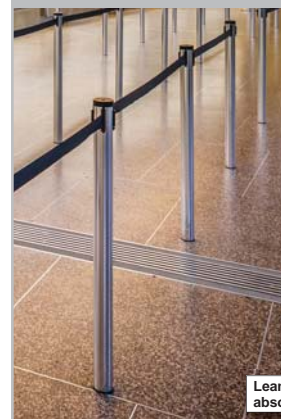
- ▶ 10' long barrier deploys in 30 seconds
- ▶ Retracts easily to less than half its size
- ▶ Heavy duty 37 lbs. barrier
- ▶ Signage, lights and panel color options



A Visiontron Exclusive

### Semi-Permanent Stanchions:

#### Mini Socket Mounted Posts:



Leans 10° to absorb impact

#### Small Socket, Quick Installation

- ▶ Maximizes Queue Space
- ▶ Easily Change Queue Line Size
- ▶ Tighter, Consistent Queue Lines



This is a sample of our product line. All products shown here are offered in a variety of options, upgrades and accessories. Visit our website or call for our full product line or for more details on individual products.