

Featured Product: WM700 & WM412

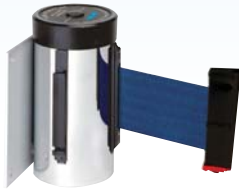


Model #
WM412SB15-RD

Versatility comes standard!

Through the years, Wall Mount Retractable-Belts® have evolved to meet customer demands for specialized mounting applications. Today, with 5 belt lengths, 8 mounting options and 4 belt end options, you can pick and choose your features to provide the best solution for your unique situation.

Model #
WM700PC-BL



Front End Applications

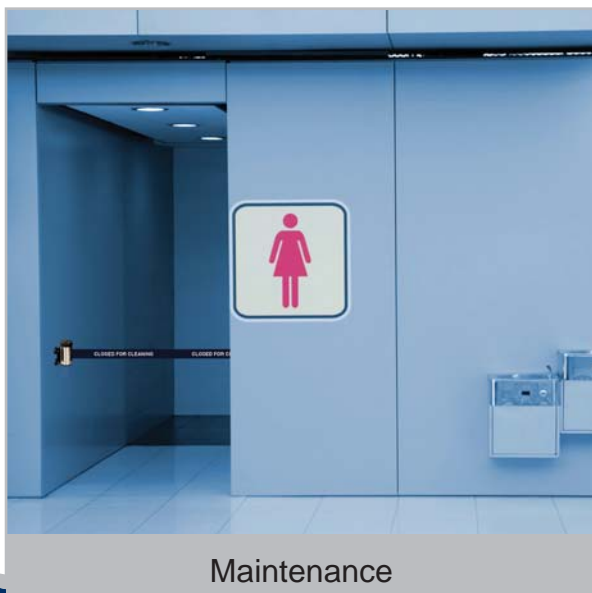


Retail

Back End Applications



Warehouse



Maintenance



Safety

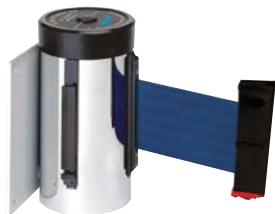
Which option is best for you?

With 3 easy steps, you can create the perfect solution for your needs.

Step 1: Choose Your Wall Mount Unit

700 Series Wall Mount Units

- ▶ Wall mount units available with a 10' belt.
- ▶ Mounting plate is permanently attached to the body.



Model #
WM700PC-BL

412 Series Wall Mount Units

- ▶ Wall mount units available with 15', 20', 25' and 30' belts.
- ▶ Mounting plate is separate from the body.
- ▶ Body can be used with multiple mounting plates.



Model#
WM412SB15-RD

Step 2: Choose Your Mounting Option

Fixed / Removable Mount (Standard)



The most common option. Great for surface mounting the Retracta-Belt® head to walls or other flat surfaces. The Removable Bracket allows you to save money by using one head in multiple locations (standard on the 412 series, optional on the 700 series.)

Typical Applications

- ▶ Closing warehouse loading docks.
- ▶ Closing aisles or doorways.
- ▶ Closing checkout lanes.
- ▶ Integrate into a queue line with Retracta-Belt® posts.



Recessed Wall Mount With Or Without A Door



Allows for a concealed look. The stylish satin stainless steel plate hides the Retracta-Belt® mechanism in the wall to prevent people from bumping into the unit. Available with a satin stainless steel door (shown) for the ultimate concealed look when it's not in use.

Typical Applications

- ▶ High end establishments which want to conceal the unit for clean aesthetics.
- ▶ High traffic areas which may have people bumping into exposed units.
- ▶ Preventing forklifts from hitting the units in warehouse applications.



Suction Cup Mount



Allows for a quick and temporary attachment to non-magnetic surfaces such as glass, ceramic tiles or non-magnetic metal surfaces.

Typical Applications

- ▶ Temporary attachment to glass to close escalators.
- ▶ Temporarily close elevators that have stainless steel entranceways.
- ▶ Temporarily close bathrooms with ceramic tile entrances.



Step 2: Continued

Magnet Mount



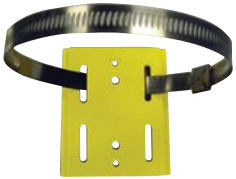
Allows for a quick and non-permanent attachment to magnetic surfaces. The metal clip hooks into warehouse rack uprights for additional securement (3/8" min. slot or hole required.) Also available as a magnet only mount.

Velcro Mount



Allows for a quick and temporary installation on any column or post ranging from 1-1/2" to 5" diameter (longer straps available.)

Hose Clamp Mount



Allows for a secure and semi-permanent connection to uprights. Standard length is adjustable from a 2" to 5" diameter.

Typical Applications

- ▶ Temporary attachment to warehouse racks.
- ▶ Temporary attachment to steel door jams or other magnetic surfaces.
- ▶ Temporary attachment to steel gondolas and other store fixtures.



Typical Applications

- ▶ Temporary attachment to non-magnetic warehouse racks.
- ▶ Temporary attachment to round uprights.



Typical Applications

- ▶ Semi-permanent attachment to non-magnetic warehouse racks.
- ▶ Attachment to maintenance cart or forklift so it is always ready for use.



Step 3: Choose Your Belt End Option

Universal Belt End (Standard)



Attaches to Receiving Ends (RE), Magnetic Receiving Ends (RE-M), Retractable-Belt® Posts and other manufactures' stanchions (all sold separately.)

"S-Hook" Belt End



Universal "S-Hook" belt end works without a receiving end. It can hook into items or it wraps around items and hooks onto itself.

Magnetic Belt End



Connects to magnetic surfaces without drilling holes for a receiving end.

Suction Cup Belt End



Connects to smooth, non-magnetic surfaces without drilling holes for a receiving end. (i.e. glass, stainless steel, aluminum, ceramic and other tile)

Typical Applications

- ▶ Across from a Fixed Mount for permanent applications.
- ▶ Closing checkout lines.
- ▶ Closing aisles or doorways.
- ▶ Integrates into a queue line.

Typical Applications

- ▶ Hooks onto warehouse racks or fences.
- ▶ Wraps around and attaches to bollards, sign posts, warehouse racks, fences and other uprights.

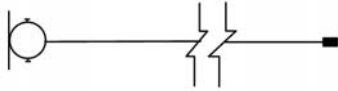
Typical Applications

- ▶ Temporary attachment to warehouse racks or loading docks.
- ▶ Temporary attachment to steel door jams or other magnetic surfaces.
- ▶ Temporary attachment to steel gondolas and other store fixtures.
- ▶ When a breakaway belt may be needed for emergency exit requirements.

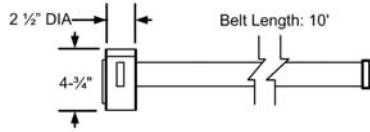
Typical Applications

- ▶ Temporarily close escalators during repairs.
- ▶ Temporarily close elevators for repairs.
- ▶ Temporarily close bathrooms for cleaning.

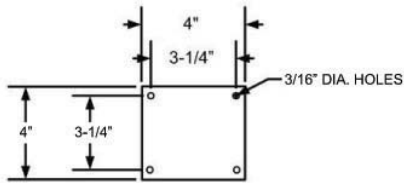
Model WM700 Specs



Top View

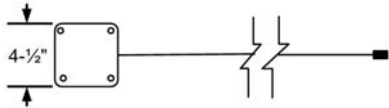


Side View

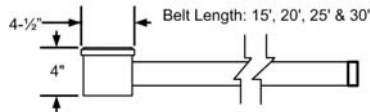


Mounting Plate Dimensions and Hole Locations

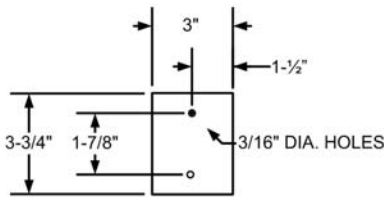
Model WM412 Specs



Top View



Side View



Mounting Plate Dimensions and Hole Locations

To Order Specify: _____
MODEL # FINISH BELT LENGTH BELT COLOR

Standard Belt Options

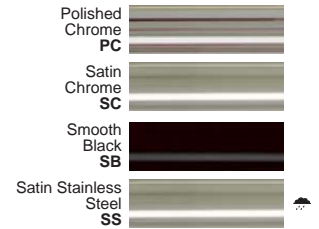
- | | |
|-------------|-------------------------|
| BK - Black | GN - Green |
| GR - Grey | DG - Dark Green |
| WH - White | LB - Light Blue |
| BN - Brown | BL - Blue |
| MN - Maroon | DB - Dark Blue |
| RD - Red | PL - Purple |
| OR - Orange | FY - Fluorescent Yellow |
| YW - Yellow | FO - Fluorescent Orange |
| | BW - Black/White Stripe |

Stock Finishes

WM412 Finishes



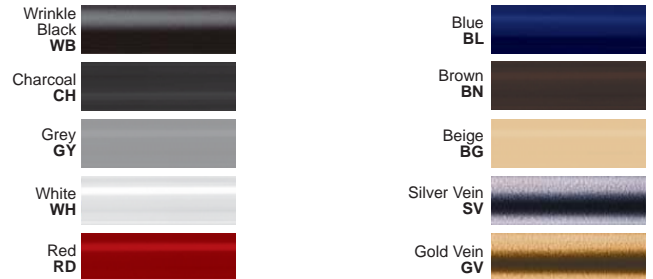
WM700 Finishes



WM700 Specialty Finishes

Class 1

Powder Coat over Steel Posts



Class 2

Brass Plating over Steel



Class 3

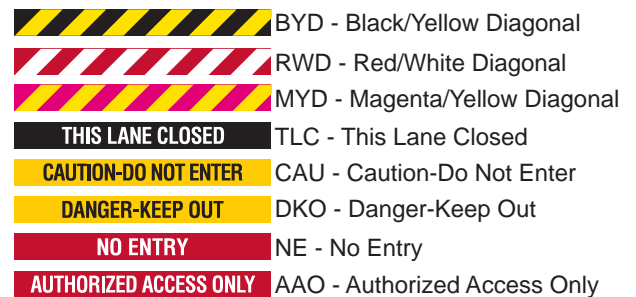
Solid Brass



Class 1, 2 & 3 are available for the WM700 only

Specialty finishes require a minimum order of 15 pieces and a 2 week lead time. Call if quicker delivery is needed.

Specialty Belt Options (Double Sided)



Custom Dye-Sub Belt Samples



*Due to printing limitations, colors shown may not represent actual product colors. Please call for samples if required.